



FR1500-ID

Slave Fingerprint reader

Single-gang Flush-mounted Fingerprint slave reader for InBio & InBioPro panels, only.

FR1500-ID features



Sleek Stylish Form Factor:

Flush-mounted single-gang stainless steel enclosure with slim and attractive design is ideal for both indoor & outdoor installations where aesthetics are very important.



Communication:

FR1500-ID connects only via RS485 to InBio & InBioPro panels or standalone reader controllers. FR1500-ID does not support Wiegand.



Easy Operation:

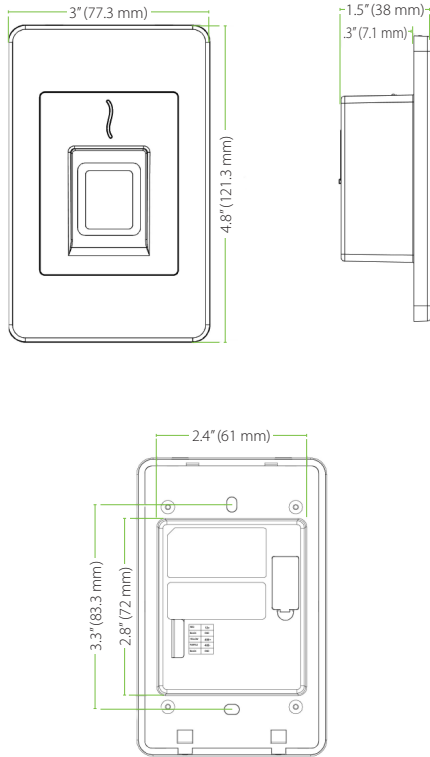
Once a user places their finger on the FR1500-ID their fingerprint is subsequently matched by the InBio (or InBioPro) panel. FR1500-ID also provides Visual indication for acceptance/rejection of the fingerprint (and/or prox card) of the users.



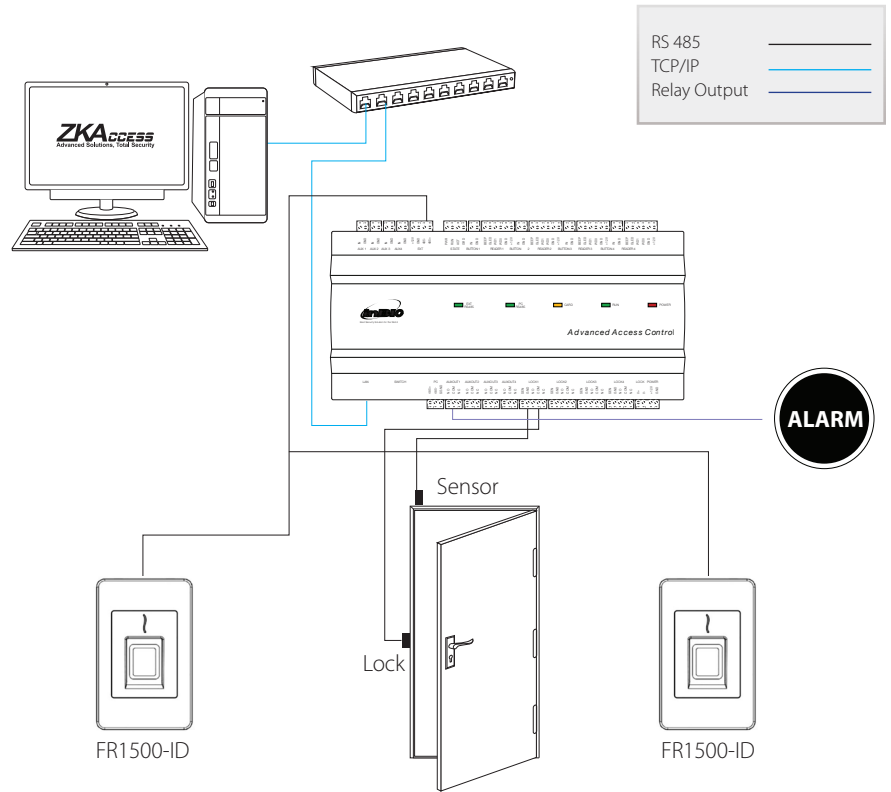
Standard Reader:

- SilkID fingerprint sensor
- Built-in ZKAccess prox card reader
- Options for HID and Mifare card readers

Dimensions



Installation with InBio (or InBioPro) panel



Specifcaton

Communication

RS485 only to InBio & InBioPro panels

Power:

12V DC, 1A

Environment:

Operating Temp: 14° to 113° F (-10° to 45° C)

Operating Humidity: 20% to 80%

Optional Card Reader:

Mifare Card, HID 125 kHz card, HID iClass card

Dimensions

Length: 4.8 inches (121.3 mm)

Width: 3 inches (77.3 mm)

Depth: .3 inches (7.1 mm) exposed
 1.5 inches (38 mm) behind wall

Part Numbers

FR1500-ID: with ZKAccess ID card reader

FR1500-M: with Mifare card reader

FR1500-HID: with HID 125 kHz card reader

FR1500-iClass: with HID iClass card reader

ZKAccess

6 Kingsbridge Road, Unit 8, Fairfield, NJ 07004

Phone: (862) 505-2101 • Fax: (862) 204-5906 • sales@zkaccess.com • www.zkaccess.com

© Copyright 2016. ZKTeco Inc. ZKTeco Logo and ZKAccess Logo are registered trademarks of ZKTeco or a related company. All other product and company names mentioned are used for identification purposes only and may be the trademarks of their respective owners. All specifications are subject to change without notice. All rights reserved.

